

Using Getmapping WMS Feeds in MapInfo Professional

WMS (Web Map Service) is a service Getmapping provides that streams digital mapping into GIS software and applications. It has been designed for individuals and organisations that use mapping software.

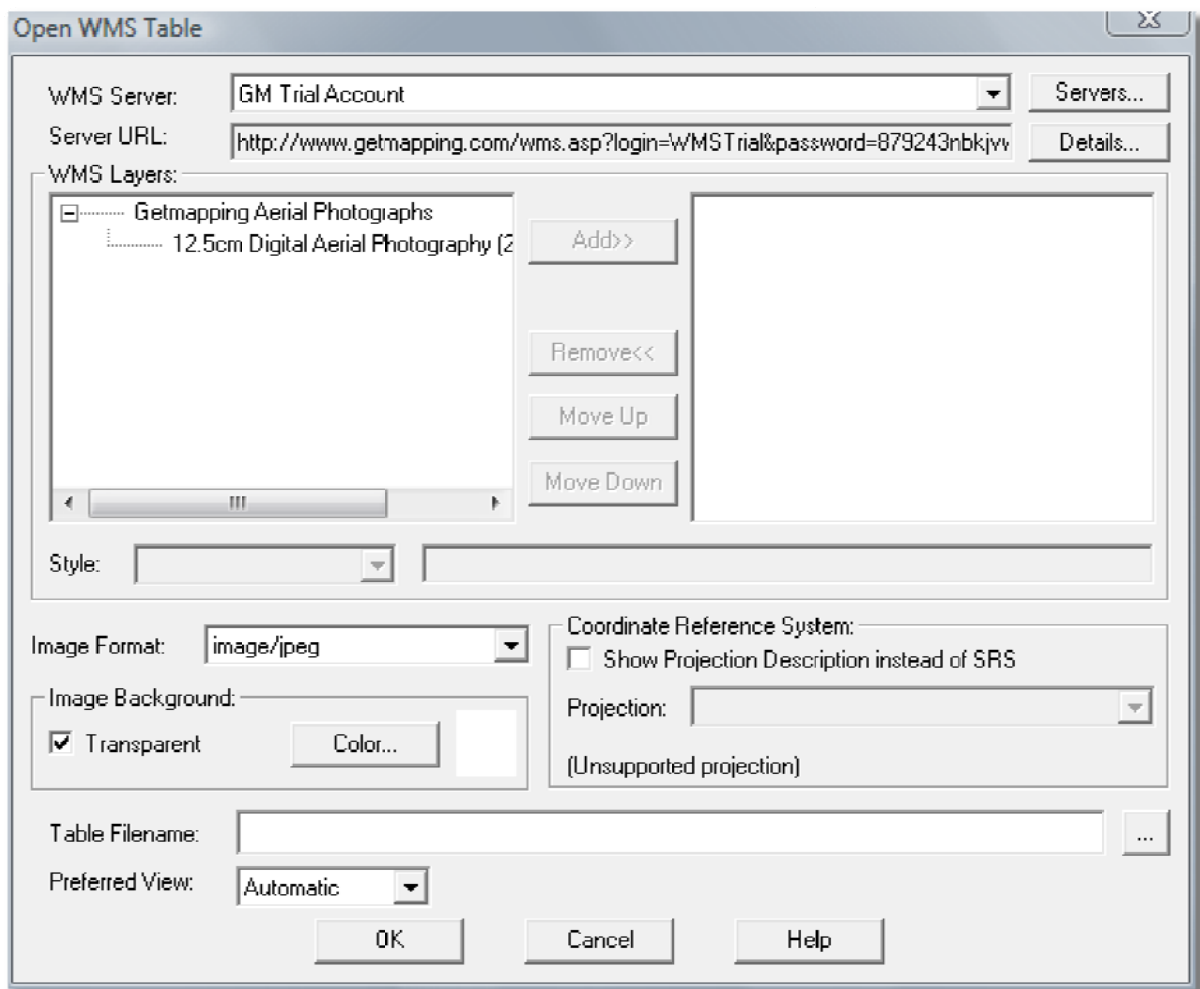
The mapping does not permanently download to your computer. This not only saves large amounts of hard drive space, but also saves time in maintaining, backing-up and updating the mapping.

To use our WMS service an account needs to be established with our sales team. They will produce a unique URL that can be used in any OGC-compliant piece of software.

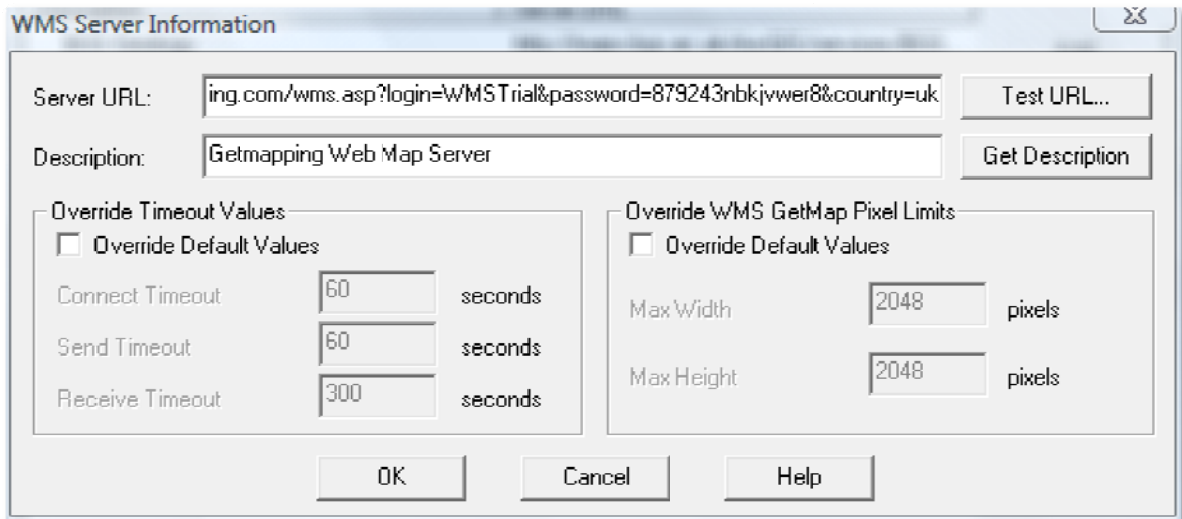
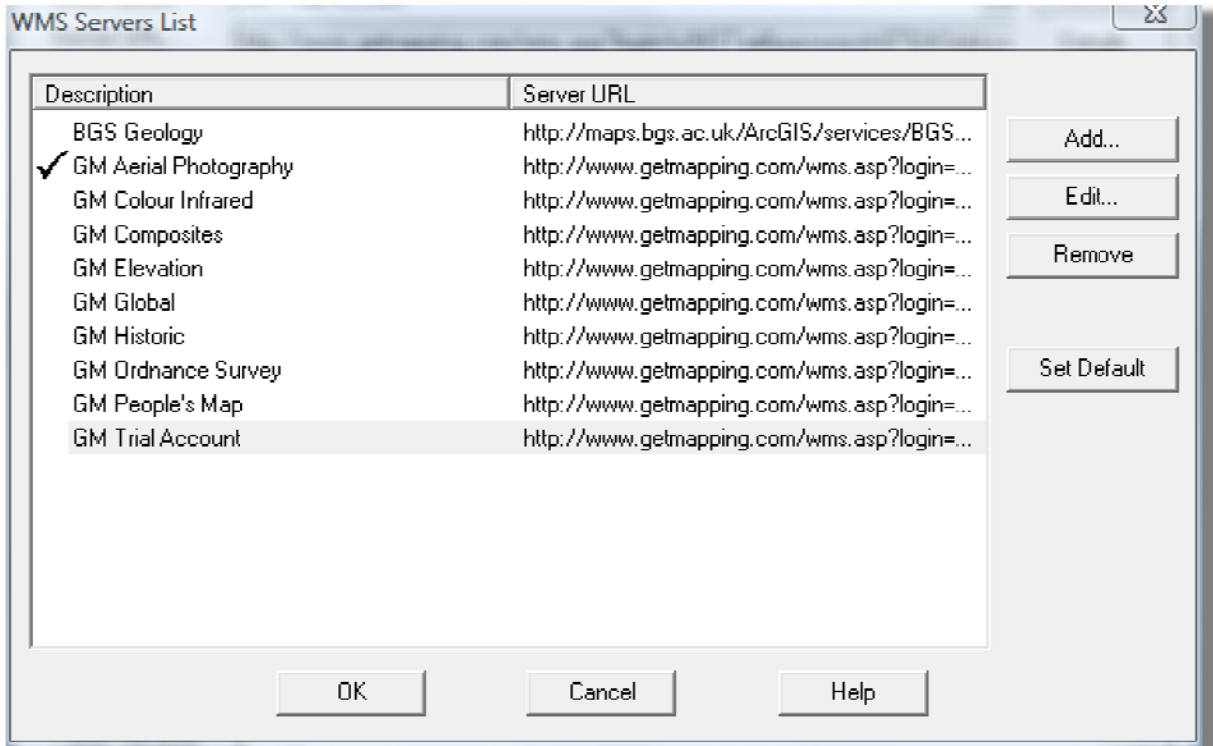
Below are instructions to setup the WMS feed in a range of compatible software.

MapInfo Professional

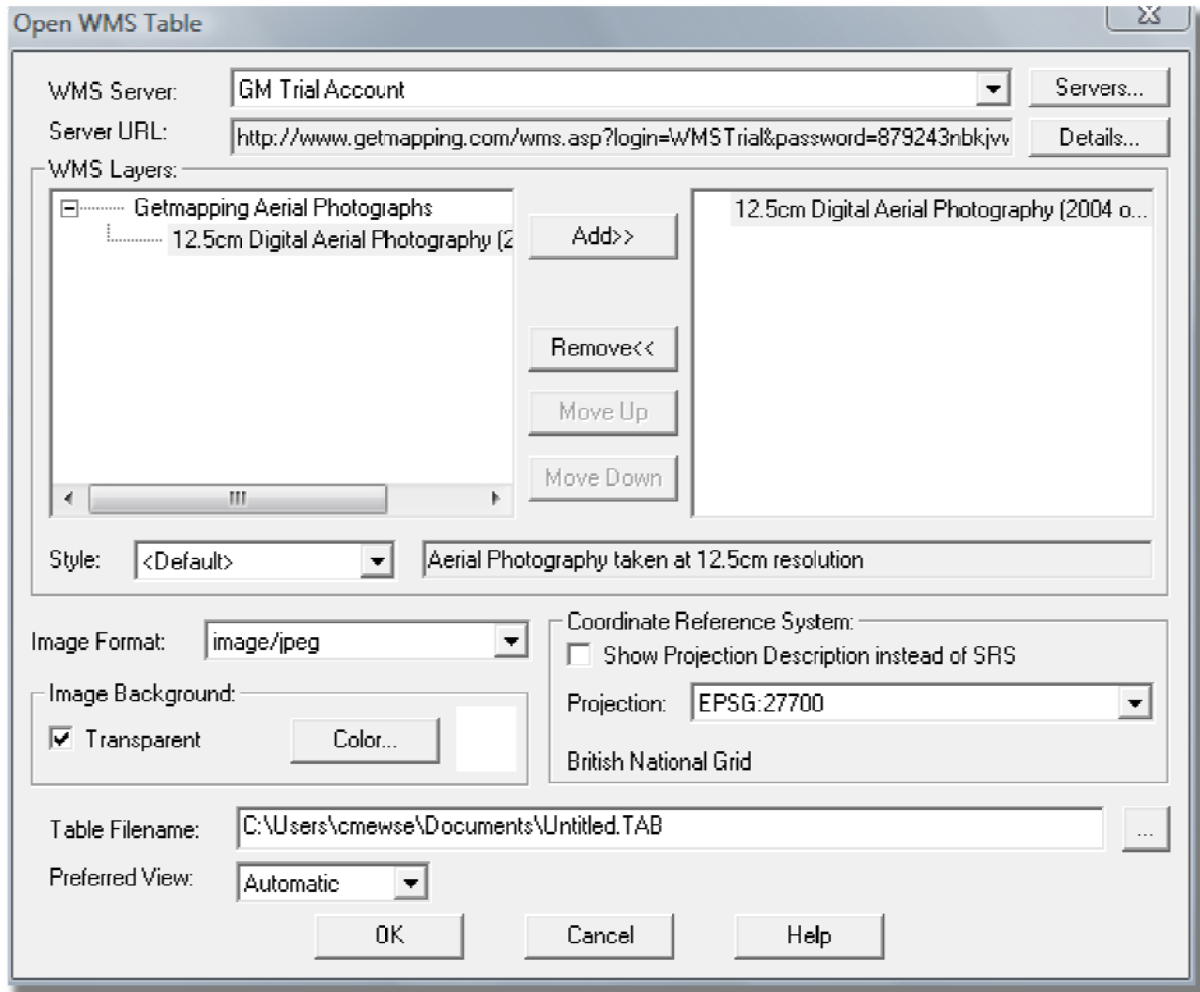
1. Copy the URL provided by Getmapping to the computer clipboard.
2. Open MapInfo Professional and, if desired, open an existing workspace or TAB file.
3. Go to File > Open Web Service > Open WMS.



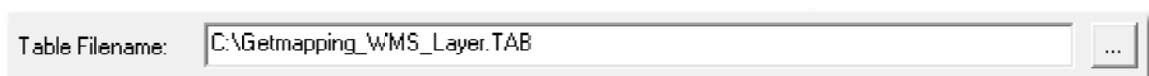
- Click on the 'Servers' button and click 'Add'.



- Paste the URL into the Server URL box and enter a description.
- To check the URL is valid, click 'Test URL'. If valid, it will display information about the feed. Click 'OK'.
- Select the newly created item in the Server List and click 'OK'.
- The WMS Table box will show the available WMS Layers. Click on a layer and click 'Add'.



9. Enter a folder location and filename in the 'Table Filename' box, or click on the browse button to open an explorer dialog to specify a location.



HINT: You only have to do this setup once. For future use, open the TAB file using File > Open.

10. Click 'OK' and the WMS layer will open into the MapInfo map window.

HINT: The WMS layer will appear blank unless the MapInfo window is zoomed in to the correct location for the data that has been requested. Try zooming into your other datasets before opening the Getmapping WMS layer.